

# HALF DOUBLE FOUNDATION

Half Double is a new and contemporary project management approach which shifts the traditional focus on deliverables to the impact created by a project while ensuring that the project progresses every week. On the course, you will participate in a 3-day IGNITE session and learn how to utilise the methodology's core elements impact, flow and leadership to increase the success rate of your projects. The course prepares you to take the optional Half Double Foundation certification, which is included in the course fee

## About the course

Half Double is a project and portfolio methodology developed by the Danish Industry Foundation, Aarhus University and Implement Consulting Group.

You will meet trainers with first-hand experience with the methodology and practical experience with applying the tools in projects both in the private and public sector. In fact, many of our trainers have been a part of developing Half Double and have been working with Half Double since its creation.

The course strengthens your understanding of the Half Double methodology and, more importantly, how it can be applied to increase early impact and the overall success rate of your projects. And it will be done in an easy, fun and rewarding manner.

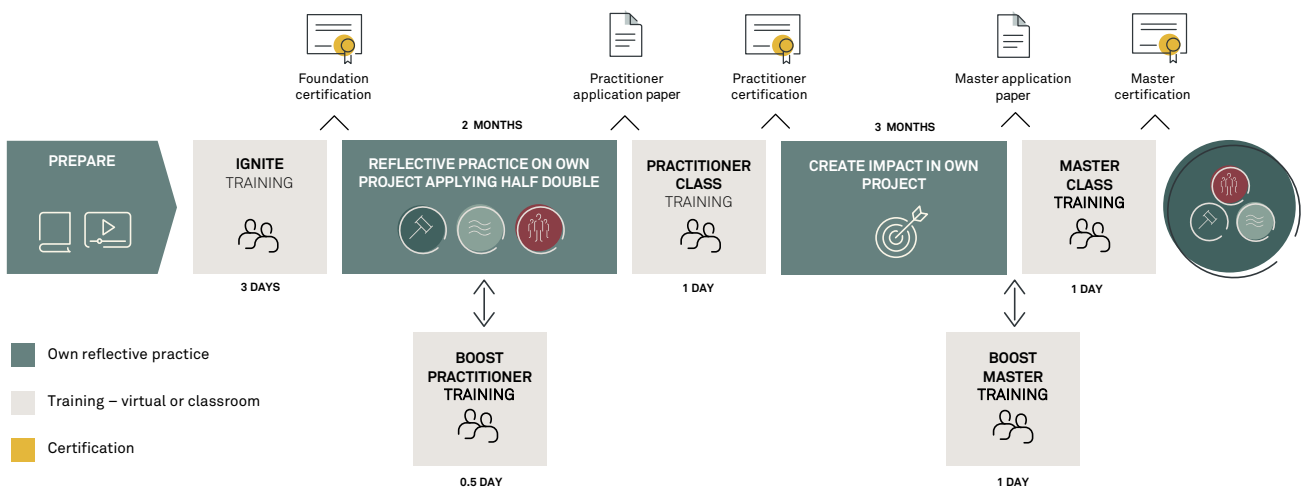
On the course, you will be provided with both theoretical skills and practical tools and templates that equip you to use the methodology from day one in your everyday life as a project manager.

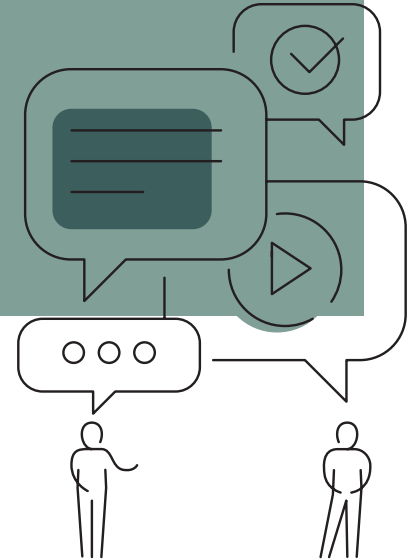
After the course, you will receive a certificate from Implement Learning Institute showing that you have completed the IGNITE training session.

After completing the IGNITE session, you can continue the Half Double training programme, which focuses even more on applying and practising Half Double (see model below).

## The IGNITE session covers the following main topics:

- The three core elements: impact, flow and leadership
- The concept of Local Translation and how it relates to the three core elements
- The Half Double methods and tools and how these can be applied in a practical context





### **After the course, you will be able to:**

- Understand the three core elements, impact, flow and leadership, and how the methodology is designed with firmness in the core and more flexibility the closer you get to the perimeter
- Explain the methodology and all its methods and tools to project management peers
- Apply the Half Double methods and tools per core element on a real-life project
- Assess a specific context and adapt the methods and tools accordingly to obtain the desired benefits
- Lead a project with an agile and flexible mindset
- Use a language and frame of reference that enable you to execute projects faster and more effectively
- Pass the optional Half Double Foundation certification

### **Target group**

The course is aimed at programme managers, project managers, PMO members and project participants. We encourage you to sign up together with a colleague from your own project team,

department or organisation, so that you can support each other in continued learning after the course is completed and facilitate the process of embedding the Half Double methodology in your projects.

### **The Half Double Foundation certification**

To get the Half Double Foundation certification, you must pass an open book 40-question multiple-choice test.

The certification is optional, and you can take the course without taking the certification. However, the course will equip you to pass the exam, and our trainers are well-equipped to help you achieve the certification.

### **Contact and enrolment**

If you want to learn more about the content and price of each course, please go to:  
[learninginstitute.implement.dk](http://learninginstitute.implement.dk)  
or contact us on +45 4138 0040.

