

HALF DOUBLE FOUNDATION AND PRACTITIONER

Half Double is a new and contemporary project management approach which shifts the traditional focus on deliverables to the impact created by a project while ensuring that the project progresses every week. On the course, you will be provided with both theoretical skills and practical tools and templates that equip you to use the methodology from day one in your everyday life as a project manager. The course prepares you to take the optional Half Double Foundation certification, which is included in the course fee, and the Half Double Practitioner certification, which can be purchased in connection with the course. Currently, Implement Consulting Group is one of the few training organisations that can nominate you to a Half Double Practitioner certification.

About the course

Half Double is a project and portfolio methodology developed by the Danish Industry Foundation, Aarhus University and Implement Consulting Group. You will meet trainers with first-hand experience with the methodology and practical experience with applying the tools in projects both in the private and public sector. In fact, many of our trainers have been a part of developing Half Double and have been working with Half Double since its creation.

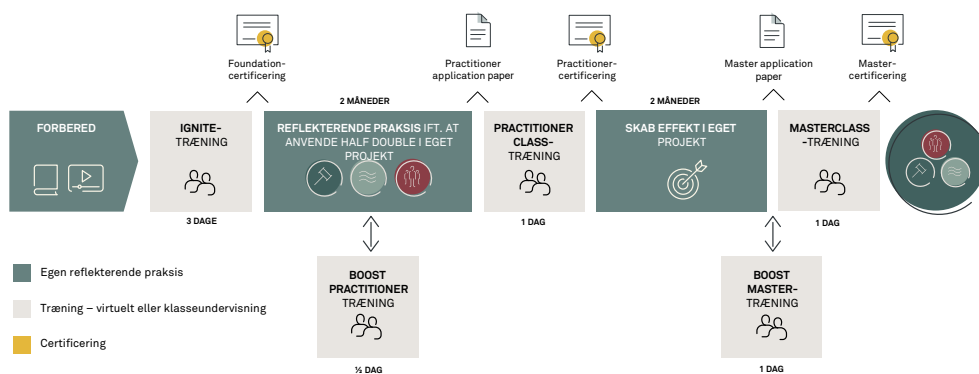
The course strengthens your understanding of the Half Double methodology and, more importantly, how it can be applied in practice to decrease your project's lead time and create impact throughout the project – not just at its end. And it will be done in an easy, fun and rewarding manner. After the course, you will receive a certificate from Implement Learning Institute

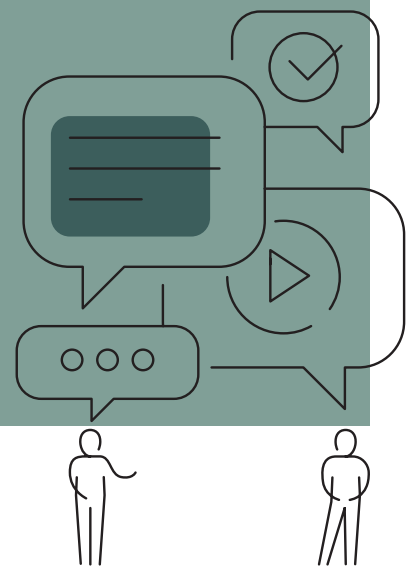
showing that you have completed the IGNITE, BOOST and PRACTITIONER CLASS training sessions.

After completing the IGNITE, BOOST and PRACTITIONER CLASS sessions, you can choose to continue the Half Double training programme:

The IGNITE, BOOST and PRACTITIONER CLASS sessions cover the following main topics:

- The three core elements: impact, flow and leadership
- The concept of Local Translation and how it relates to the three core elements
- The Half Double methods and tools and how these can be applied in a practical context
- How to assess a specific context and adapt the chosen Half Double methods and tools according to obtain the desired benefits





- After the course, you will be able to:
- Understand the three core elements, impact, flow and leadership, and how the methodology is designed with firmness in the core and more flexibility the closer you get to the perimeter
- Assess a specific context and adapt the methods and tools accordingly to obtain the desired benefits
- Lead a project with an agile and flexible mindset
- Use a language and frame of reference that enable you to execute projects faster and more effectively
- Consciously adapt the Half Double methods and tools to fit your organisational context
- Confidently apply methods to handle uncertainty and motivate your project owner to engage actively in a project
- Deliver project impact within a significantly reduced time frame
- Reduce the project lead time significantly
- Pass the optional Half Double Foundation and Practitioner certifications

learning after the course is completed and facilitate the process of embedding the Half Double methodology in your projects.

Half Double certification

As part of the Half Double training, you have the opportunity to become a certified project manager in the Half Double methodology.

To get the Foundation certification, you must pass an open book 40-question multiple-choice test.

To get the Practitioner certification, you must send in an application and pass a 1-hour interview with an accredited assessor. The Half Double Practitioner certification costs DKK 5,000.

Both certifications are optional, and you can take the course without taking the certifications. However, the course will equip you to pass the exams, and our trainers are well-equipped to help you achieve the certifications.

Target group

The course is aimed at programme managers, project managers, PMO members and project participants. We encourage you to sign up together with a colleague from your own project team, department or organisation, so that you can support each other in continued

Contact and enrolment

If you want to learn more about the content and price of each course, please go to:
learninginstitute.implement.dk
or contact us on +45 4138 0040.

